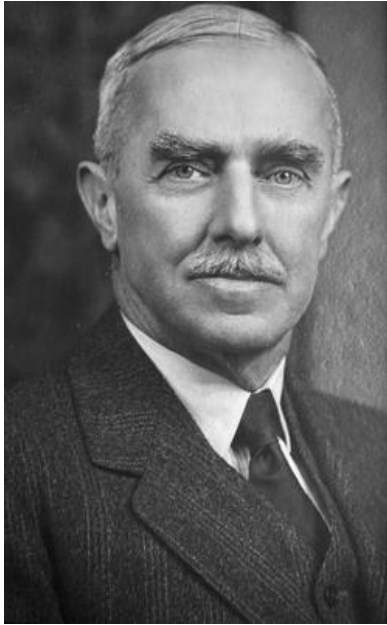


MATH 315: Fall 2024
Assignment 15
Due: Monday, November 4

Reading: "Read Parts C and D of Section II in Chapter 14 of Olinick

Writing: Write up solutions to Exercises 4, 13abc and 17 in Chapter 14 of Olinick



Anderson Gray McKendrick
September 8, 1876 – May 30, 1943



William Oglivy Kermack
April 26, 1898 – July 20, 1970

"McKendrick was a truly Christian gentleman, a tall and handsome man, brilliant in mind, kind and modest in person, a skillful counsellor and administrator who gave of himself and knew how to enable others." (W. M. Hirsch) *Oxford Dictionary of National Biography*, Oxford University Press.

In view of the extent and variety of his scientific activity, it is difficult to appreciate that Kermack spent most of his adult working life and two-thirds of his entire life under the handicap of total blindness. Whatever physical torment and mental anguish he may have suffered at the time of his accident and during the period immediately afterwards, and whatever moments of despair he may have endured, he subsequently gave the impression of an inner contentment and a complete acceptance of misfortune. He appeared to be invariably cheerful and placid—a friendly man with simple tastes and a sense of humour who thoroughly enjoyed meeting people and talking to them (J. N. Davidson). Source:

Biographical Memoirs of Fellows of the Royal Society, Nov., 1971, Vol. 17 (Nov., 1971), pp. 399-429